



Forever Flowering Greenhouses
Light Deprivation & Greenhouse Supplies

Table of Contents

<u>What is Light Deprivation?</u>	pg. 1-2
<u>BlackOut Materials</u>	pg. 3
<u>Translucent Woven Cover</u>	pg. 4
<u>Lock-Down</u>	pg. 5
<u>Accessories</u>	pg. 6
<u>Retractable Series</u>	pg. 7-9
<u>California Eclipse</u>	pg. 10-11
<u>Cold Frames</u>	pg. 12-13
<u>Northern Latitude</u>	pg. 14-15
<u>OG</u>	pg. 16-17
<u>Radiant Heat Flooring</u>	pg. 18-19
<u>Take Only Memories - Leave Only Footprints?</u>	pg. 20-21

Forever Flowering Greenhouses

www.foreverflowering.net 1-888-78-GHOUSE

Are You Afraid of the Dark?

These days growing has a lot to do not only with quality and variety but the time of the season in which you can market your products. Nothing like having a bumper crop of tomatoes at the same time every other farmer just harvested their crop. Instead, by using the control that light deprivation offers to the farmer you can have a high quality crop available when everyone else is looking at their flower sites just starting to develop and/or your second crop harvested when all the long season growers are beginning to get prepared for the harvest season. To 'light-dep' a plant is to shorten the duration of the sun's light cycle, (done in many different ways) so as to encourage the plant to flower in a time of year that wouldn't naturally trigger plants to flower outdoors.



“In environments that have a short growing season due to early or late frosts, light deprivation allows an outdoor crop to start flowering earlier than ‘full season’ plants therefore allowing for an earlier harvest. Eliminating the detrimental effects of cold and frost to the crop. Multiple crops can be grown each year outdoors in the same amount of space that one crop would be grown in.”

Ok. Sounds great... Whats the drawback? The farmer has to be VERY aware as to make sure that the cycle stays the same every day. This means that if one is to choose a dark period of 7pm to 7am that the plant has to be blacked out EVERYDAY at 7pm and opened at 7 am. EVERYDAY. It is the same as an indoor growing environment.

When it's night time, its night time. A good technique is to choose a flowering time that allows you to close the blackout just as it is getting dark and then an hour after it is good and dark retract the blackout. In the morning close the blackout an hour before it gets light out. This allows the plants to be in fresh air the majority of the night and decreases the amount of time that they are in a

closed space enduring high humidity. When a grower is choosing a design one should consider a company that automates their systems under greenhouse material or creating a manual system themselves that is covered by an outer layer of greenhouse material. There is nothing like trying to manipulate a long cumbersome piece of plastic that is soaking wet from the rain and keeping it from not snagging and ripping.

Our greenhouse automated control system allows the plants to breathe in fresh air through the night and then be closed into darkness before dawn. At FFG we offer automated systems to make sure that your greenhouses are on schedule, so that you don't have to be. Heat and humidity reducing 'breathable' and non breathable fabrics are featured in the following pages. ~Maximum Yield, Sept. 09~



Forever



Flowering

Black Out Materials

*“Only Breathable
Black Out Fabric
on the Market”*



Breathable BlackOut Fabric
17' - 30' - 42' Wide
Black on White
Reinforced Edges



**Non Breathable
BlackOut Fabric**
13' - 26' - 39' Wide
Black on White



- Hi-Strength Poly Weave
- Impact & Tear Resistant
- Heat Reflective

Forever Flowering

Translucent Woven Fabric

Using a Poly-weave fabric eliminates hot-spots that can form when using a Poly-film through a phenomenon known as Light Diffusion. This optical property is caused by the interaction of particles in the Poly-weave with the light rays. This property is very important in greenhouses since it will determine the actual amount of photosynthetic light available for the plants by controlling the amount of light scattering within the greenhouse. Diffused light will help prevent shadows in the greenhouse allowing lower leaves of plants to be exposed to light. With reduced leaf and soil temperatures, light diffusion is one of the single biggest factors to success and high quality yield in greenhouse growing year-round.

- High Impact & Tear Resistant
- Anti-Fog & Condensation
- 80+% Light Transmission
- 100% Light Diffusion
- UV Stabilized



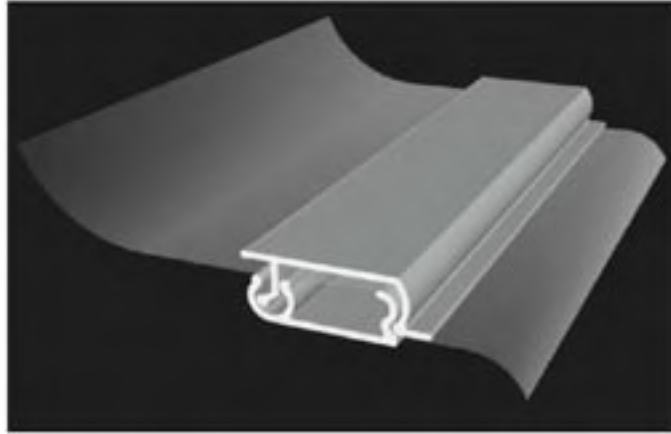
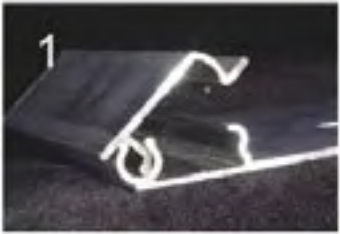
*10 Mil
Poly Weave
Fabric*

Available In 17' - 30' - 42' Wide

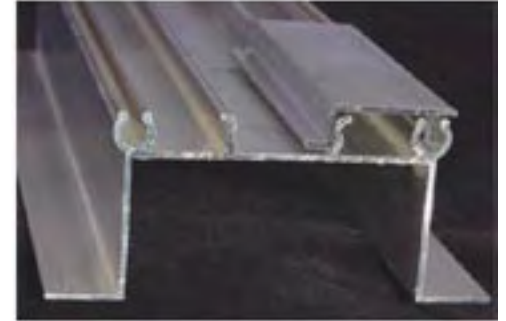


Forever Flowering

Lock-Down



Splice for Poly Sidewalls



Splice for Poly Endwalls



Gable for Rigid Endwalls



The New Solution All Aluminum Self Locking Parts

- 12' Base section
- Easy to install 1' or 2' top sections.
- No clips to cut poly or inserts to lose shape.
- Reusable season after season
- Protects Poly from ultra violet rays
- Prevents heat build-up at critical holding points
- Quick and Easy Installation
- No special tools required to install or remove

Forever



Flowering

Starfin Above Canopy Heating



Star Fin's tapered six fin design has 3 times the surface area of two-fin designs or 51mm thin-wall steel tubing. This increased surface area produces StarFin's high heat output, allowing lower water temperatures to be used and producing a soft, gentle greenhouse heat.

6

Forever Flowering Accessories

Circulation Fans

- 12" 1/10 hp, 115/230 volts, 1.3/.65 amps, 1725 rpm, 1554 ccfm
- 20" 1/3 hp, 115/230 volts, 3.8/1.9 amps, 1725 rpm, 5516 ccfm
- Totally enclosed heavy-duty maintenance free motors
- Thermally protected, pre-lubricated ball bearings
- Non-restrictive fan guards with aluminum fan blade

High Quality Greenhouse Lighting

- Only the highest quality reflective materials
- Scientifically designed and engineered
- The new industry standard in reflector performance

De-Humidifiers

A self-contained, fully automatic solid adsorption type dehumidifier containing two desiccant beds. One bed supplies dehumidified air, the other is being regenerated. Separate blowers and filters are provided for the adsorption and reactivation air circuits.

Forever Flowering

Retractable Series

Forever Flowering

Automated light deprivation greenhouses allow you to extend or shorten your growing season, all year, at the flip of a switch.

Get the best of both worlds with our automated retractable roof and rollup sidewalls. Automated controllers allow the plant to bathe in full sun or closes the walls and roof for a secure environment against some of nature's harsh elements.



Forever Flowering

Retractable Series



All of our automated black out systems come with a complete environmental control system. Our standard lumen meter allows you to use the free power of the sun and automatically supplement with artificial lighting, reducing the high electricity costs of grow light usage. The basic greenhouse is designed to be eco-friendly, eliminating the need to stay plugged in to high-power consuming products. A 20-amp circuit runs the basic greenhouse making remote solar system installations possible. Standard rain gutters allow you to harness nature's abundant water supply, making it available for the seasons watering needs.

Forever Flowering

Retractable Series

Forever Flowering's engineering is backed by over 20 years of experience. Our professional grade greenhouses are constructed using a sturdy, galvanized steel A-frame design with high wind and snow loads. Footings are concreted in for a secure foundation. Roof fabric is a woven laminated polyethylene and our black out fabrics are horticulturally designed material of poly threads knitted together with an aluminum weave top layer.

Forever Flowering Retractable Series

Available in 24' - 30' - 40' Widths
Lengths Available in 12' Sections

Our polyweave fabric dissipates the intensity of summer's heat, so your plants can continue growing instead of using their energy to cool themselves! Excess humidity is released through our breathable fabric when the blackout is closed as well. Optional internal roll-up walls allow vegetative and flowering stages in the same greenhouse.

1-888-78-GHOUSE

California Eclipse

by Forever Flowering

A Stand Alone - Manual - Light Deprivation Solution



*Changing
The Game...
Again!*



- One person operation
- High strength airplane grade rails
- Modular aluminum structure including galvalume lift bows
- Rope-operated roll-up doors and an easy-to-use ratchet tensioning system at each end
- UV protected dual tone blackout shell (white exterior with black interior)

California Eclipse

by Forever Flowering



- Fits Inside Many of Our Greenhouses
- Can Go Inside Your Current Greenhouse
- No Greenhouse Needed, Outdoor Enabled
- Engineered for High Wind & Snow

Available in 12' or 24' Wide
Custom Lengths

For Questions About Sizing the

California Eclipse
with a Greenhouse Call Us:

1-888-78-GHOUSE

Retracts to 20% of its extended length





California Eclipse
Compatible

Forever



Flowering

Cold Frame Series



12

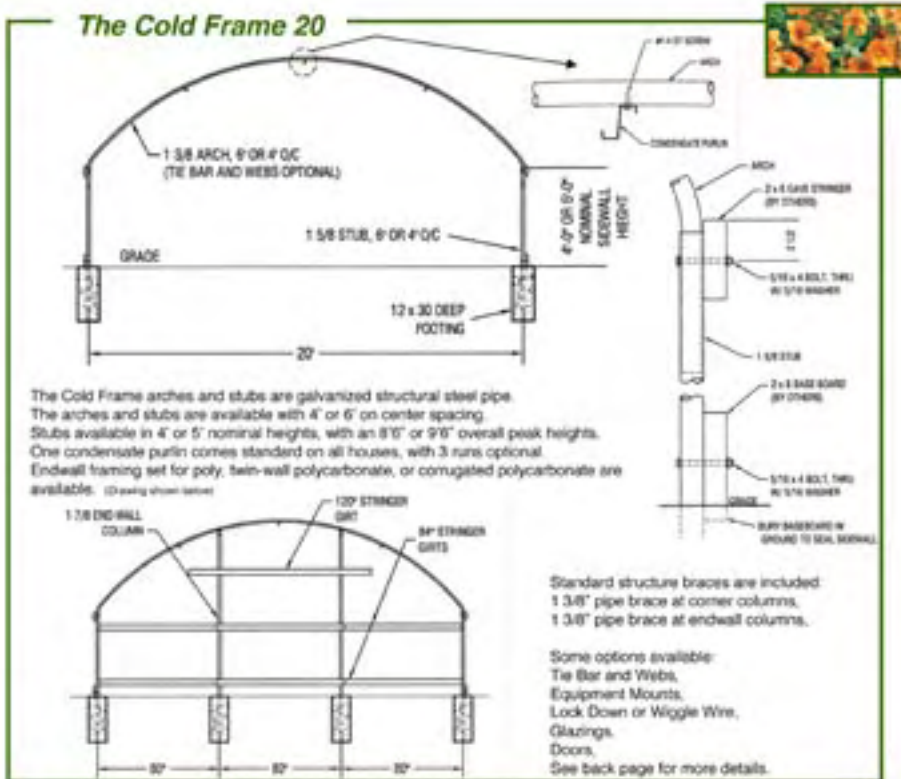
Our Cold Frame is known for being one of the strongest on the market

Forever



Flowering

Cold Frame Series



A Seasonal Non-Code Structure

- Easy for new growers to set up and enjoy
- The perfect solution for starter houses
- Ideal for over-winter crop protection
- Available in 16' & 20' Wide
- Lengths Available in 12' Sections





California Eclipse
Compatible

Forever  *Flowering*

Northern Latitude

Code or Non-Code



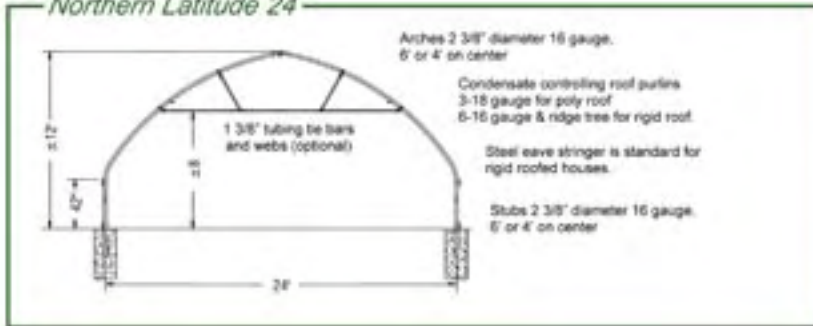
Forever



Flowering

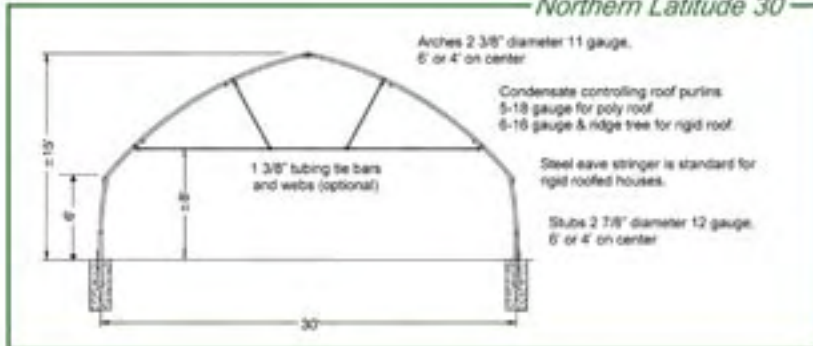
Northern Latitude

Northern Latitude 24



- The Northern Latitude meets building codes but it may also be purchased without the tie rods and webs as non-code.
- The Northern Latitude's unique arch design is stronger and drips less than other greenhouses on the market.
- Many growers use the roll up sidewalls and a roof vent at the peak.

Northern Latitude 30





California Eclipse
Compatible

Forever  *Flowering*

OG - Original Gardener



Forever Flowering

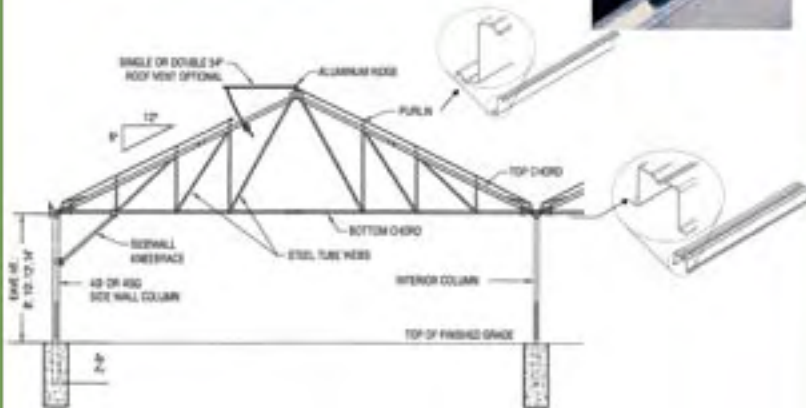
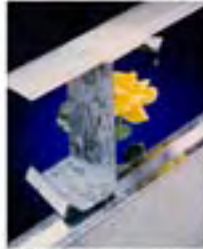
OG - Original Gardener

Automated Black Out Available

Built-in Condensation Control

The OG-Original Gardener is the "dry house"

We call it the dry house because the condensation does not drip like other greenhouse designs where condensation control was not incorporated into the design. The OG roof system collects condensation from the inside of the roof and channels it outside the greenhouse, not on your plants. The purlins have a specially formed channel to collect the condensation. From there, the water drops to the special 'V' in the top chord and travels down and into the gutter.



The OG has the room and the strength to take advantage of all the labor and energy saving innovations on the market. Any combination of which may be selected when customizing your greenhouse.

- Automated Blackout
- Energy Curtains
- Watering Booms
- Evaporative Cooling
- Lighting & Heating
- Vent Equipment

Widths of 30' & 42' with eave heights of 14'

6:12 Roof Pitch

The advantage of the OG-Original Gardener 6:12 peak is threefold.

- 1) 6:12 Roof pitch causes the condensation that forms on the inside of the roof panels to run down the panels rather than drip onto the crop.
- 2) Increased air mass in the roof keeps the temperature inside the greenhouse cooler in the summer and more stable all year.
- 3) Tall peak makes the OG roof vent very effective at venting the hot air out of the greenhouse.



Forever Flooring

Radiant Roll-Out Heat

Forever Flooring

works great on dirt floors and benches for container gardening.

It provides effective and economical bottom heat for germination, propagation & growing. With the heat mat rolled out you can safely put your plants right on top of the tube mat, walk on the mat and roll your wheel-barrow over it with confidence of durability.



A sensor in a sample pot regulates the heating switch and soil temperature.

The root zone is the most important part of the plant to be kept warm and forever flooring provides the heat directly where you need it.

We supply all the drawings and prewired electrical parts. Available in individual parts & pieces too.

1-888-78-GHOUSE

Forever Flooring

is both effective and efficient making it the heating choice with the best 'cents' to heat your growing space

When used in conjunction with our starfin tubing, a canopy level heating system, the heat is applied at the root zone and at the canopy, efficiently heating your plants without the need to heat your entire growing area.

Forever Flooring

Radiant Roll-Out Heating

Available Options:

Forever Flooring Mat for Benches

- 2" heating tubes on center, other spacings available

Forever Flooring Mesh for floors

- Tubes are woven on 3" centers directly into a "weed mat" fabric and shipped on a roll just like standard ground cover fabric. This provides optimum even heating for gently warming crops produced on the floor. This is the most cost effective and simple way to get warm floors in your operation.

- **Piping for Kits** - Avoid trips to the hardware store
- **Extra Zones** - Expand your heating area potential
- **Manual Shut-Off** - For manual zone control

Witness robust growth and incredible rooting with our high-tech, simple system.

The only surprise you'll get while installing is how easy it is!



- **Technology Made Simple**
- **Anybody Can Install It**
- **Convenient Roll Size**

Take Only Memories... Leave Only Footprints?



Although a lot of growing is happening outdoors these days there are still thousands of indoor growing operations around the nation and the world. For the most part these grows are being fueled by public utility companies and/or diesel generators deep in the hills. The carbon footprint that is being created to fuel the indoor gardening industry is a huge side effect that up to this time is not being addressed. As major cities begin passing laws regulating larger and larger growing operations we can only expect the footprint to get larger. We at Forever Flowering Greenhouses, FFG, have been committed to the reduction of the carbon footprint

in the hydroponic/indoor/outdoor gardening industry for the last five years and longer as responsible growers and consumers. We have the most efficient method and products for cultivation available today. Through a process called LIGHT DEPRIVATION we are allowing our customers to grow high quality, high quantity, clean, and safe products in greenhouses year round. We estimate that electric savings are over 60% compared to indoor grows and outdoor yields are more than doubled. Instead of turning lights on and off we control the hours of sunlight coming in with blackout fabric materials. This allows for year round flowering with outdoor quantities and indoor quality.

To further decrease our footprint we have the ability to capture and store rainwater for watering the crop throughout the year. Supplemental lighting systems are controlled by light sensitive monitors to only turn on lights when desired light levels are not reached. When the light is sufficient they turn back off. We have documented proof that our greenhouses reduce the amount of water needed because the soil temperatures remain at a healthier level.

Pest sprays are also greatly reduced due to the health of the plants and the ability to control the pest's access to the plants. We are currently working with organizations in major cities to develop roof top greenhouses. This will allow for an even further decrease in the grower's footprint as the obvious 'dead space' of the roof top is now turned into an ideal 'full sun' growing opportunity.

We hope that through our efforts of educating and supplying the public and cities with the appropriate technology and methodologies of low impact cultivation the current trend of rising supply and demand can be achieved without taxing our natural environment beyond reason. We hope that these working models can be studied and replicated by individuals and cities around the country as they begin to develop their own policies surrounding this industry.

We at FFG are committed to working for the awareness and compassion not only for the growers and end users but for the land and the waters from which these products are grown. We hope that everyone can take a moment to reflect on the impact your room / garage / warehouse and greenhouses are making and take the initiative to reduce your carbon footprint.

You can find a full offering of our products at WWW.FOREVERFLOWERING.NET or call us at 1-888-78-GHOUSE to ask how you too can do your part to reduce your impact on the world around you while still improving and enjoying the quality of life you desire. We all are the ones setting the example in this very momentous time in history. Each one of us can help make a difference and allow this industry to be looked upon for answers and guidance. Be part of the solution not the pollution!!!

~As Featured in Maximum Yield~



Forever Flowering Greenhouses



California Eclipse



Our Mailing Address:

2036 Nevada City Hwy. #214
Grass Valley, CA 95945

Contact Us:

Forever Flowering Greenhouses
(P) 1-888-78-GHOUSE (F) 530-273-2354

Visit Us Online:

www.foreverflowering.net
info@foreverflowering.net